



## 24 Ronald Street, London, E1 0DT

City Realtor are proud to present to the market this massive four double bedroom maisonette flat off Commercial Road.

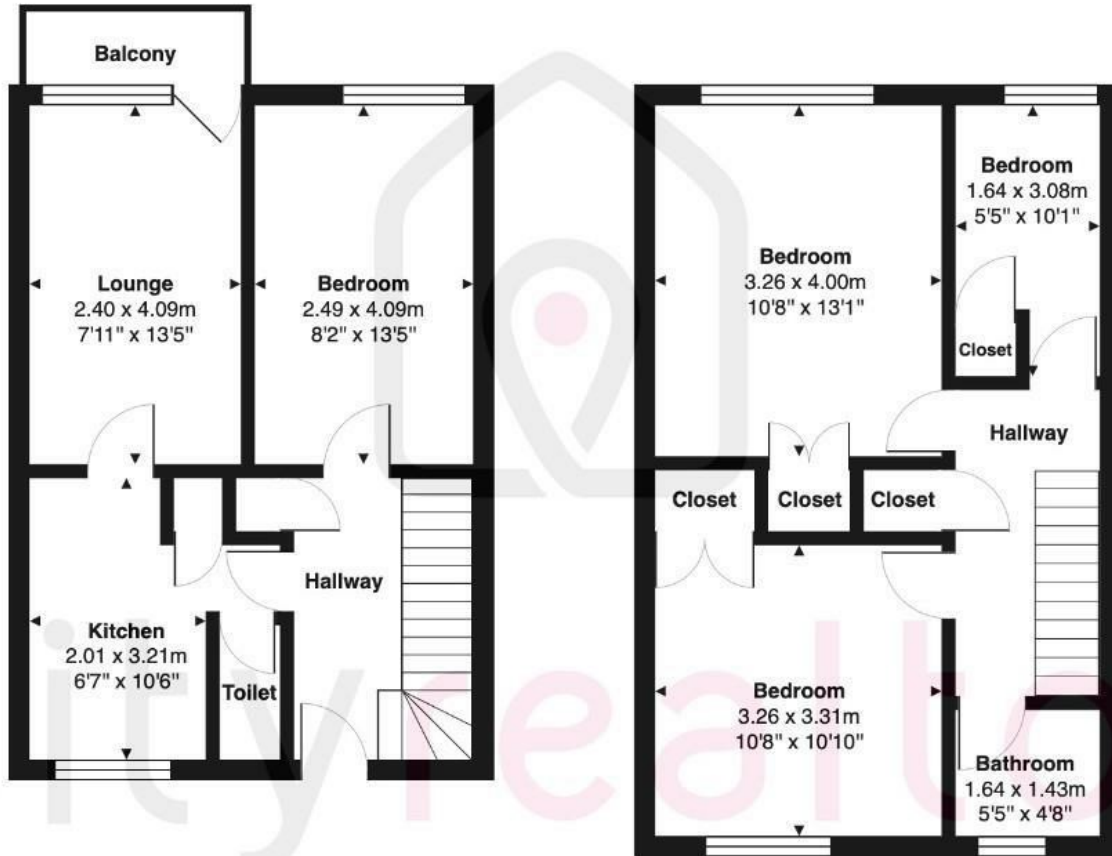
The spacious maisonette flat will come fully furnished as seen in the pictures. The flat consists of four spacious double bedrooms and a cozy lounge with a balcony. There is a full bathroom with a separate toilet and a fully fitted kitchen.

The property is close to Commercial Road and Whitechapel Road where you can find all the local amenities you need, e. g. restaurants, supermarkets, bank and post office etc.

- Large Maisonette
- Spacious Lounge
- Two Toilets
- Off Commercial Road
- Near All Amenities
- Phenomenal Transport Links

**£3,250 Per month\* Fees Apply**

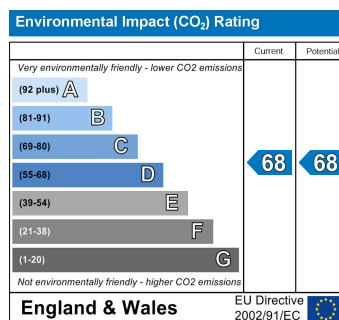
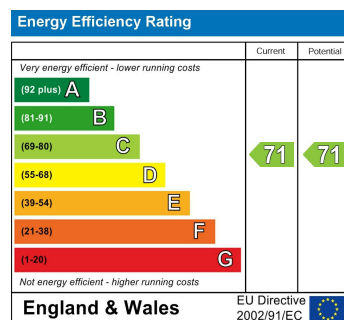
# Ronald Street



## Third Floor

Total Area: 79.8 m<sup>2</sup> ... 859 ft<sup>2</sup> (excluding balcony)

All measurements are approximate and for display purposes only



These particulars, whilst believed to be accurate are set out as a general outline only for guidance and do not constitute any part of an offer or contract. Intending purchasers should not rely on them as statements of representation of fact, but must satisfy themselves by inspection or otherwise as to their accuracy. No person in this firm's employment has the authority to make or give any representation or warranty in respect of the property.